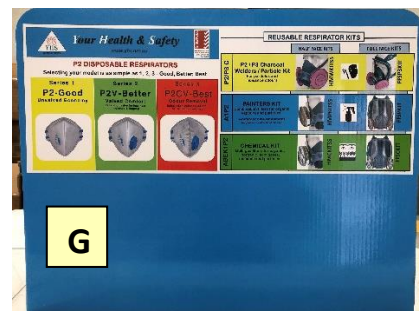
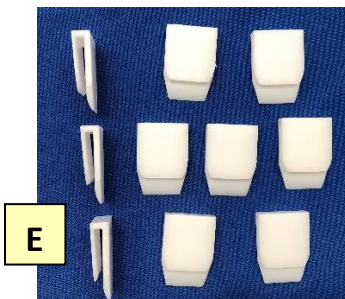
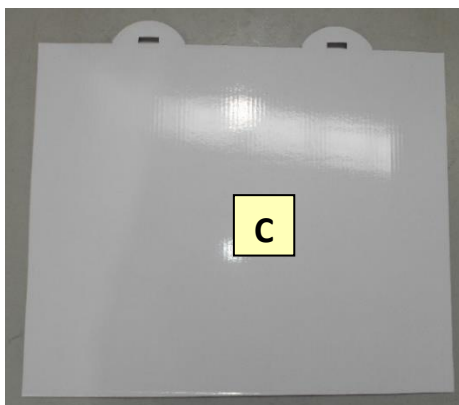
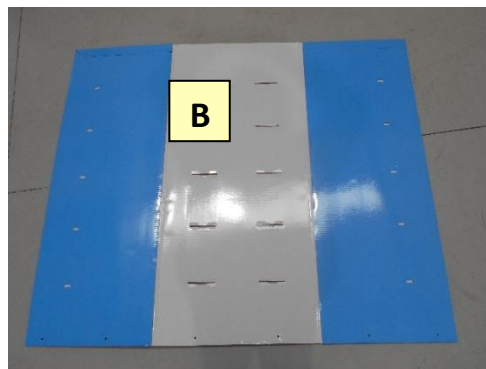
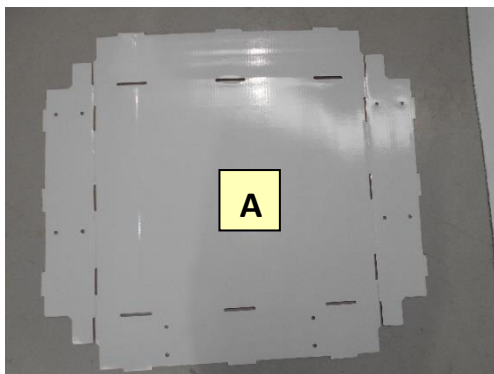


# YHS Merchandiser Assembly Instructions

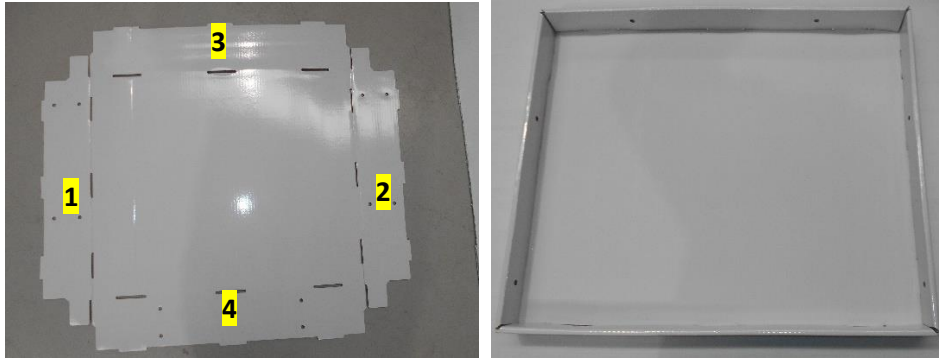
## Parts:

- A. Base x 1
- B. Frame x 1
- C. Shelves x 5
- D. Metal poles x 5
- E. Clips x 10
- F. Bolts/Nuts x 7 (1 spare)
- G. Product Header Panel x 1

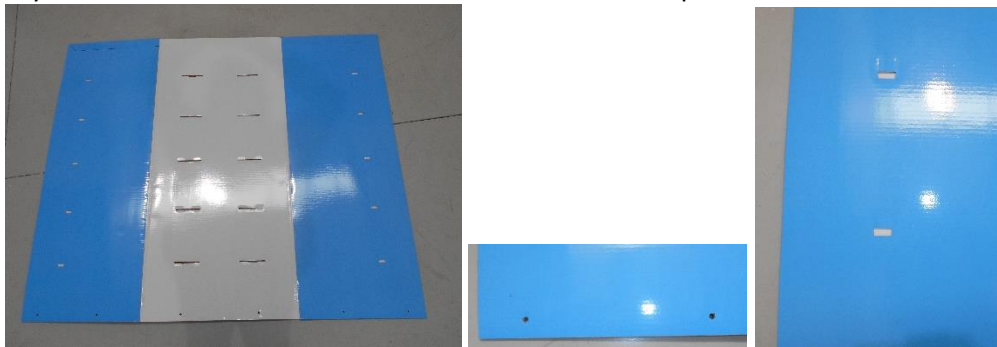


**Assembly:**

1. Fold in sides of base in order 1 to 4. Ensure all tabs are fully seated.



2. Lay frame on a flat surface with holes at the bottom and pole slots visible.



3. Place assembled base at bottom of frame and fold up frame sides. Ensure side of base without holes is at the front



- Secure frame sides and rear to base using bolts and nuts x 6. Nut can be carefully pressed onto bolt then screwed to firmly secure. Unscrew if its is necessary to remove bolt.



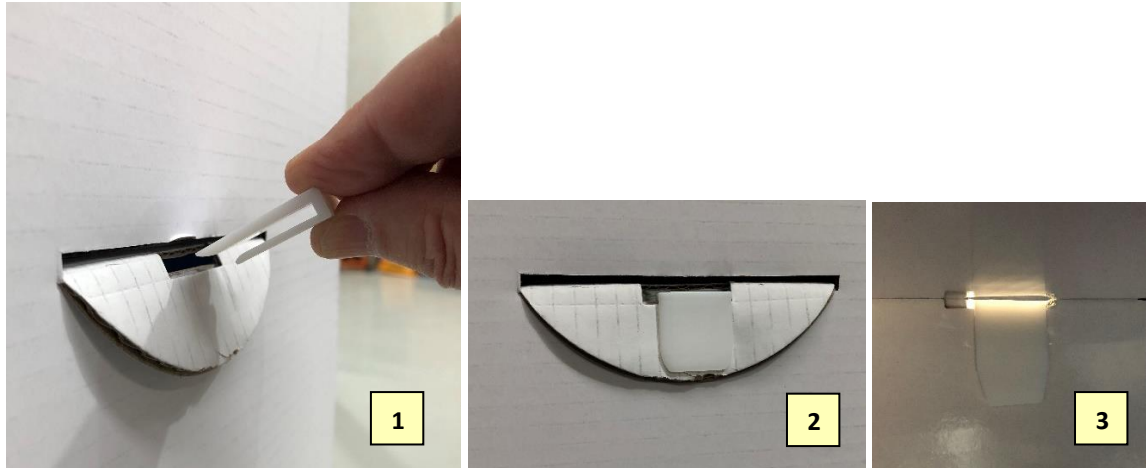
- Stand frame with installed base upright.
- Insert a metal pole fully into lowest pole slots, you may need to carefully bend pole ends in slightly if pole does not slide fully into slot.



- Slide shelf onto pole ensuring tabs extend fully through back of frame.



8. Fold down shelf tabs at rear of frame and secure with a clip. Insert longer edge of clip from rear of merchandiser (see image 1 below). Shorter edge should cover tab (see image 2 below) and longer edge should be visible under shelf on the inside of the merchandiser (see image 3 below).



9. Repeat steps 6 to 8 to install remaining shelves, working from bottom to top.
10. Slide Product Header Panel into top of assembled merchandiser, ensuring it is fully seated.

